



ICEO926 ON B42

Features

- Space-saving 22" (558 mm) wide design.
- Low profile design for difficult-to-fit applications.
- Produces up to 930 lbs (422 kg) of ice per day.
- *Harvest Assist* provides consistent ice production for the life of the ice maker while reducing energy consumption and increasing capacity.
- *Pure Ice®* exclusively by Ice-O-Matic. Built-in antimicrobial protection for the life of the ice maker inhibits bacteria growth on ice maker surfaces. Ice-O-Matic's optional water filtration system provides protection against unpleasant tastes, odors and scale formation.
- Durable, electroless nickel plating on all evaporator plates ensures reliability.
- *Longest optional warranty in the industry.* Purchase an Ice-O-Matic water filter with your cube ice maker, replace the filter every six months, and the evaporator warranty is extended to 7 years parts and labor (available in the U.S. and Canada only).
- ENERGY STAR® rated.

Options

| WATER FILTERS | | | |
|-------------------|----------|-------------|--------|
| Ice Machine Model | Manifold | | Inline |
| | System | Replacement | System |
| ICEO926 | IFQI | IOMQ (1) | N/A |

Ice Maker Warranty

Every Ice-O-Matic ice maker is backed by a warranty that provides both parts and labor coverage.

- Three years **Parts** and **Labor**.
- Five years **Parts** coverage on the evaporator and compressor.
- Seven years **Parts** and **Labor** on the evaporator when you purchase an Ice-O-Matic water filter with your cube ice maker and replace the filter every six months (available in the U.S. and Canada only).

Ice Form



CUBE

| FULL CUBE DIMENSIONS | |
|----------------------|---|
| W x D x H (in.) | 7 ⁵ / ₈ x 7 ⁵ / ₈ x 7 ⁵ / ₈ |
| W x D x H (mm) | 22 x 22 x 22 |
| HALF CUBE DIMENSIONS | |
| W x D x H (in.) | 3 ⁵ / ₈ x 7 ⁵ / ₈ x 7 ⁵ / ₈ |
| W x D x H (mm) | 10 x 22 x 22 |

Bin Chart Kits for Combining Wider Bins with Smaller Models

| ICE STORAGE BINS | | | | | | | | | | | |
|------------------|-----------|------------------|------------------|------------------|------------------|------------------|-------------------|------------------|--------------------|-------------------|-------------------|
| Kits | Model No. | B25 | B40 | B42 | B55 | B700 | B1000 | B100 | B1300 | B1325 | B1600 |
| | Capacity | 242 lbs (110 kg) | 344 lbs (156 kg) | 351 lbs (160 kg) | 510 lbs (232 kg) | 680 lbs (308 kg) | 1000 lbs (454 kg) | 854 lbs (388 kg) | 1320 lbs (599 kg) | 1325 lbs (601 kg) | 1660 lbs (753 kg) |
| | Width | 30 in (762 mm) | 30 in (762 mm) | 22 in (559 mm) | 30 in (762 mm) | 30 in (762 mm) | 30 in (762 mm) | 48 in (1219 mm) | 48 in (1219 mm) | 60 in (1524 mm) | 60 in (1524 mm) |
| ICEO926 | | KBT19 | | Kit Not Required | KBT19 | | | KBT 222* | Kit Not Required** | | |

See Ice-O-Matic Price List for Adapter Kits to combine ice makers with most available ice/beverage dispensers.

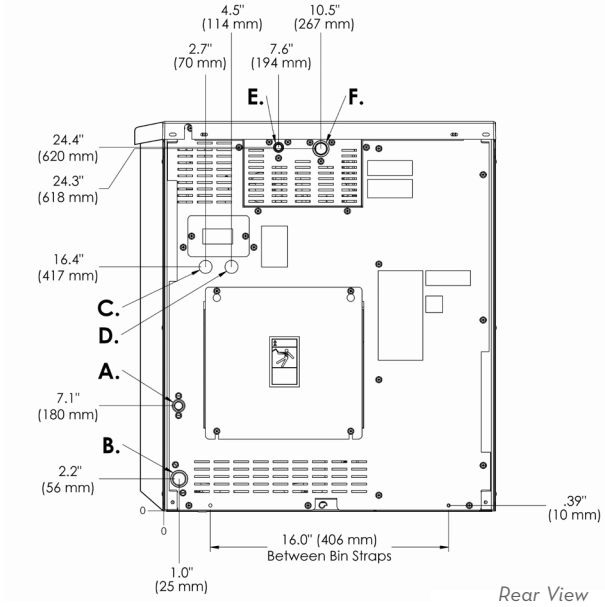
*KBT222 only for dual iceheads.

**No charge for Side by Side tops when ordered at time of purchase. Additional charges apply when ordered separately.





ICEO926 CUBE ICE MAKER



Remote Cooled

- A. Ice maker potable water in, 3/8" FPT.
- B. Ice maker water out, 3/4" FPT.
- C. Hole for electrical connections, 7/8".
- D. Hole for remote electrical connection, 7/8".
- E. Liquid line, 3/8" male quick connect coupling for precharged line set.
- F. Discharge line, 1/2" male quick connect coupling for precharged line set.

Operating Requirements

| | MINIMUM | MAXIMUM |
|-------------------------|-------------------|-------------------|
| | | 60 Hz |
| Ambient Temp. Range Air | 50°F (10°C) | 100°F (38°C) |
| Water Temp. | 40°F (4.4°C) | |
| Water Pressure | 20 PSIG (1.4 BAR) | 60 PSIG (4.1 BAR) |

Dimensions

| ALL MODELS | |
|-----------------|----------------------|
| W x D x H (in.) | 22.3 x 24.25 x 26.06 |
| W x D x H (mm) | 566 x 616 x 662 |

Specifications

| Model Number | Cond. Unit | Ice Production per 24hrs | | Water Usage gallons per 100 lbs of Ice 90°F air/70°F water | | kWH Used per 100 lbs of ice @ 90°F air/70°F water | Voltage Characteristics | Min. Circuit Ampacity | Fuse Size | Approx. BTUs per hour** |
|--------------|------------|------------------------------|------------------------------|--|-----------|---|-------------------------|-----------------------|-----------|-------------------------|
| | | 70°F air/50°F water lbs (kg) | 90°F air/70°F water lbs (kg) | Potable | Condenser | | | | | |
| ICEO926R★ | Remote* | 930 (422) | 780 (354) | 20.0 | - | 5.10 | 208-230/60/1 | 16.2 | 20 | 17,200** |

NOTES:

Number of Wires: 3 (including ground)
 Approx. Shipping Weight lbs (kg): ICEO926: 215 (98)
 Refrigerant Type: R404A

*Requires Remote VRC2061 condenser and precharged line set.
 **BTUH is calculated 0°F Evaporator, 100°F Condensing, and 33 PSIG.

★ENERGY STAR qualified machine. Please see our website www.iceomatic.com for the latest list of ENERGY STAR qualified machines and available rebates

Accessories

| Model Number | Description |
|--------------|---|
| VRC2061B | Remote condenser |
| KIBDO1 | Ice Level Kit for Coke® Freestyle |
| RT325 404 | 25 ft. Precharged Tubing Kit for units using R-404A refrigerant |
| RT340 404 | 40 ft. Precharged Tubing Kit for units using R-404A refrigerant |
| RT360 404 | 60 ft. Precharged Tubing Kit for units using R-404A refrigerant |
| RT375 404 | 75 ft. Precharged Tubing Kit for units using R-404A refrigerant |